

2022 Annual Report

2022: BECOMING THE MODEL OF EXCELLENCE

A letter from the Founder and Chairman of the Board

Dear Friends,

Abe's Garden Community was built with a passionate mission to elevate the care of those living with Alzheimer's. It started by discovering and testing best practices and then becoming the premier model for memory support, continually sharing our learnings with as many caregivers and industry professionals as possible.

After touring care communities considered to be the top in the country, we identified many of the best practices at the time. Wonderful design elements, programs, and approaches were captured and introduced throughout this decade-long process. We discovered the world-renowned memory support and engagement consultancy Hearthstone Institute and their evidence-based *I'm Still Here*® approach to dementia care. This philosophy empowers individuals with cognitive challenges to discover activities of interest. This might encourage socializing or participation in purposeful activities. Happiness is the ultimate goal.

Prior to opening our doors in 2015, our staff was educated in the *I'm Still Here*® approach, and after completing this training, our organization became a certified Memory Support Center of Excellence - and we have recertified every year since. I'm very proud of this.

In September 2022, the Education and Advisory Division of Hearthstone Institute merged into Abe's Garden Community, forming the **Hearthstone Institute at Abe's Garden**. Now, we are combining our collective knowledge, influence, missions, and resources to continue expanding, improving, and sharing cutting edge best practices in older adult care.

Abe's Garden Community is now THE Center of Excellence model for professionals from senior living communities to experience and be trained in the *I'm Still Here*® approach.

Also in September 2022, Susannah Dwyer, BSCHons/RPT/L was named Abe's Garden Community CEO. She brings more than 25 years of leadership experience in senior living, home health, outpatient rehabilitation, and private duty home care.

Every advancement in the organization is thanks to YOU, our supporters. We have been able to stay focused on our mission to elevate dementia care, improving the quality of life for seniors while expanding our reach.

With sincere gratitude,



Michael D. Shmerling
Chairman of the Board

A LOOK BACK AT 2022

Q1

RESIDENTS ENJOYED BRAIN
HEALTHY ACTIVITIES AND EVENTS,
INCLUDING CREATING ART
THE NASHVILLE OPERA PERFORMED



Q2

VOLUNTEERS WERE RECOGNIZED AT
AN APPRECIATION LUNCHEON
RESIDENTS ENJOYED A LUAU



Q3

SUSANNAH DWYER JOINED AS CEO
CHRIS COELHO NAMED COO
THE BOARD WELCOMED
NEW MEMBERS MINA JOHNSON,
ABBY TROTTER & BRENDA WYNN
HEARTHSTONE INSTITUTE AT
ABE'S GARDEN WAS FORMED
AGC HOSTED OUR INAUGURAL
CLASSIC CAR SHOW

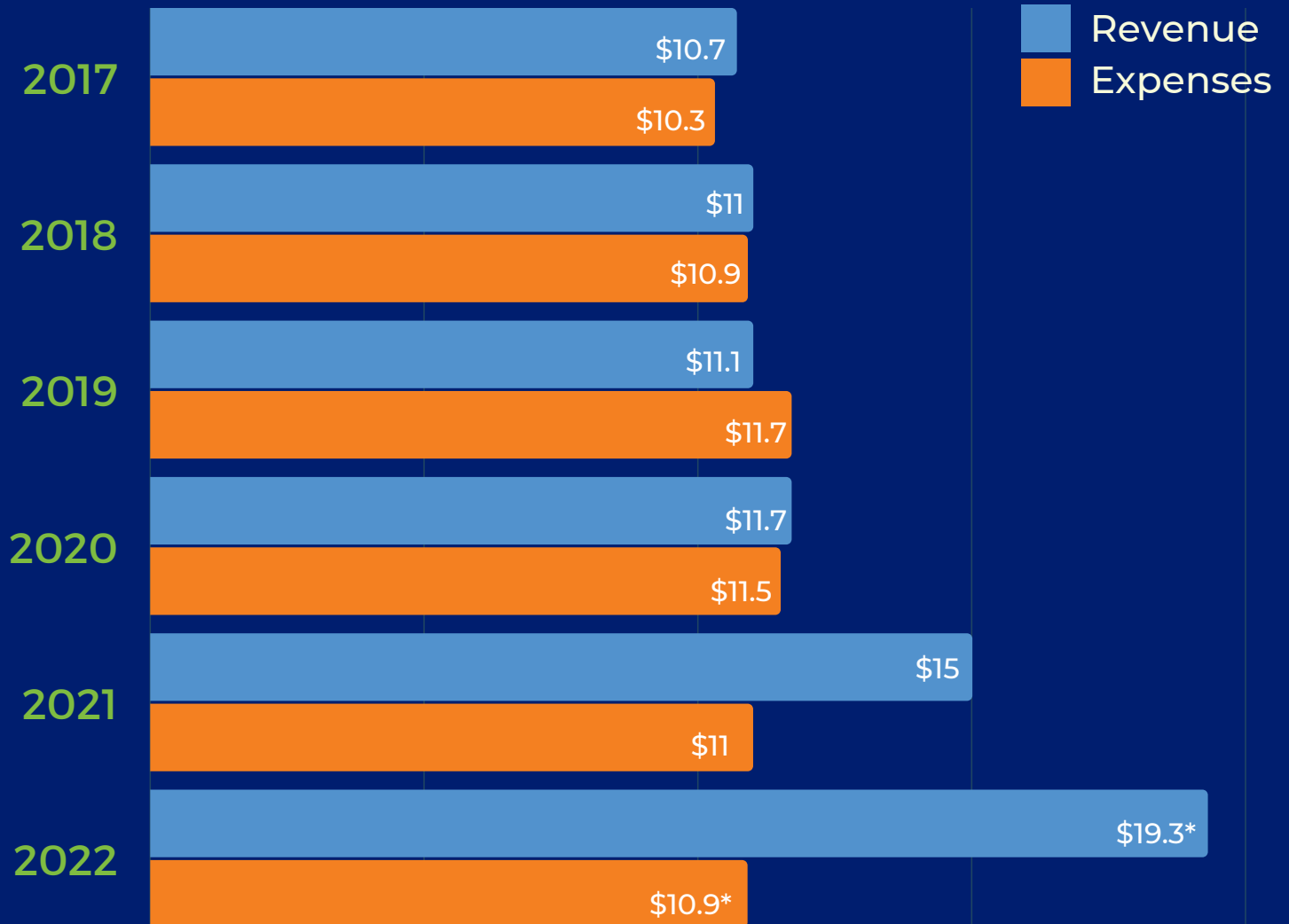


Q4

RESIDENTS ENJOYED THE FALL
FESTIVAL & HALLOWEEN PARTIES
INDEPENDENT & ASSISTED LIVING
RESIDENTS ATTENDED THE
INAUGURAL WEEKLY FIRESIDE
HAPPY HOUR
STAFF RECOGNIZED FOR 5 & 10
YEARS OF SERVICE

REVENUE/EXPENSES

(in millions)

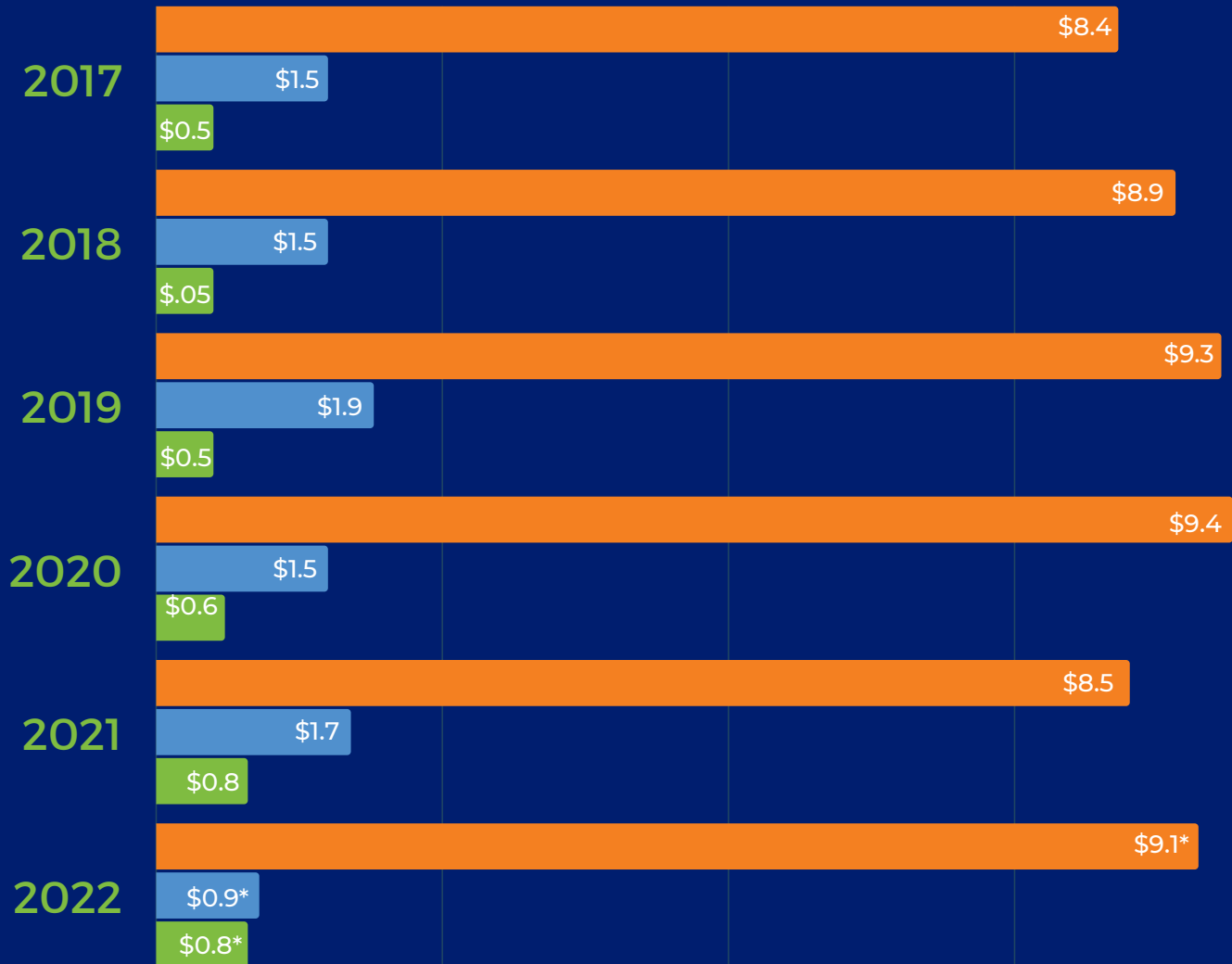
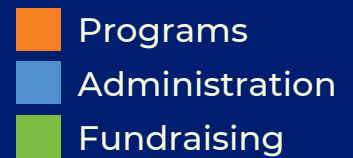


*unaudited



2022 EXPENSES BREAKDOWN

(in millions)



*unaudited



LIFE AT Abe's Garden Community



ABE'S GARDEN COMMUNITY

◀ 2022 BY THE NUMBERS ▶

59,860

RESIDENTIAL NIGHTS
across independent living, assisted
living and memory support

HOME TO

164
RESIDENTS

**Abe's Garden
Community Group**

Early-stage dementia
social/support program

13 participants

17 outings

100+ hours of exercise

30 hours of music therapy

20 volunteers & instructors

dedicated their time teaching
culinary, tai chi, music, Spanish,
and more!

Our licensed musical therapist
led **106** sessions for residents

21 dogs and **1** cat shared
their time with residents

461

philanthropic partners gave

\$9,598,987

in new gifts and pledges in
support of the Abe's Garden
Community mission

133

are new donors

WE SERVED

82

clients through
Abe's Garden at Home

Our monthly virtual support group
helped

28 caregivers

whose loved one is on the Abe's
Garden Memory Support waitlist

caregiver videos viewed in

31 countries

250 volunteers

shared their time and talent
with residents and/or
program participants

TESTIMONIALS

"My life - and my husband's life - has improved 1000% since we moved Mom into Abe's Garden Community. She is safe and secure, and we have an entire community there that helps support us. I believe Mom is happier, feels more secure, and has a much more active social life, and many more visitors. She loves the people, the dining hall, and the staff."

~Marye W. Lewis (daughter of an Independent Living resident)

"Based on the phenomenal experience our family had with Abe's Garden Community for our mother during its first two years, we didn't even consider any other memory care community for my oldest sister with Alzheimer's. Another sister then developed memory loss due to severe Parkinson's. Now both sisters are in the same loving care by the Abe's Garden Community staff we experienced with our mother. We have peace of mind knowing they have the best care in Nashville and the country."

~ Larry Trabue (brother of two Memory Support residents)

"I had been part of a support group at Abe's Garden Community for years. When a suite became available in January 2022, I moved my husband in. I miss him terribly, but I know I could not care for him alone any longer and I am so thankful that he is in a place where he is safe, cared for, and busy doing things that he can participate in."

~ Pam Benton (wife of a Memory Support resident)

"Everyone, and I do mean everyone on staff is caring and incredibly well trained on how to help even the most knowledgeable person deal with the devastating effects of a loved one with Alzheimer's. It is a long journey, and it needs effective partnership between caregivers and family. Abe's Garden Community provides the very best I have ever seen or heard about. From staff who really care, to ownership and management that truly support their staff, it is best in class in every possible way. It is a tremendous relief to know my loved one is well cared for and safe, and quite possibly in better care than I could provide!"

~ Elizabeth Humphreys (daughter of an Assisted Living resident/Abe's Garden Community Group participant)



Perennial Society FOUNDING MEMBERS

We are grateful for the individuals who have included Abe's Garden Community in their estate plans. These gifts represent significant commitment and future support to ensure that Abe's Garden Community continues to provide brain health, wellness and purposeful living for seniors.

Sarah Anderson

Christopher Brown

Geraldine Bryant

Anita Cochran

Donna & Mark Coleman

Anonymous

Anonymous

Judy & Gil Given

Stacy Harris

Reva Heller

Paul Kuhn

Paula Lovell

Patty & James Marks

Sharon & Moises Paz

Mollie & Robert Perry

Anonymous

Suzanne & James Schulman

Debbie & Jim Shmerling

Lisa & Mike Shmerling

Lisa & Rob Shmerling

Lisa & Steve Small

Laura & Pete Zabaski

Beth Zeitlin

(**Bold type** denotes new members since January 2022)



2022 BOARD OF DIRECTORS

Michael Shmerling, *Chairman*

Donald Holmes, *Vice Chairman*

Phil Billington, *Treasurer*

Susan Foxman, *Secretary*

Chris Brown

Mary Kate Mouser

Scott Burns

Bernard A. Pargh

Kim Campbell

James Phillips

Ron Corbin

Bill Purcell

Katie Crumbo

Jayne Sallerson

John Hassenfeld

James E. Shmerling

Mina Johnson

Saurabh Sinha

Charlotte Nesbitt Langford

Abby Trotter

Steve Moran

Brenda Wynn

Ryan Moses

2022 National Facts

11 million

Americans provide unpaid care for people with Alzheimer's or other dementias.

These caregivers provided more than 16 billion hours, adding up to nearly

\$272 Billion

Between 2000 and 2019, deaths from heart disease have

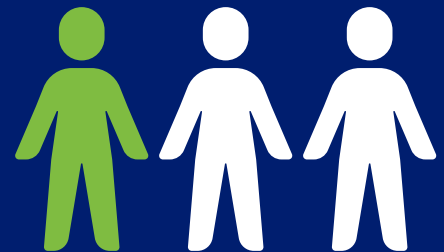
**decreased
7.3%**

While deaths from Alzheimer's disease have

**increased
145%**



Americans are living with Alzheimer's



1 in 3 seniors die every year from Alzheimer's or another dementia



MISSION STATEMENT

Abe's Garden Community is establishing a replicable model for senior life that is focused on brain health, wellness and purposeful living.

HISTORY & BACKGROUND

Year of Incorporation: 2007

Organization's Tax-Exempt Status: 501(c)(3)

Organization's Federal Tax ID Number: 06-1818302

615.997.3030 | www.abesgarden.org

115 Woodmont Boulevard | Nashville, TN 37205

